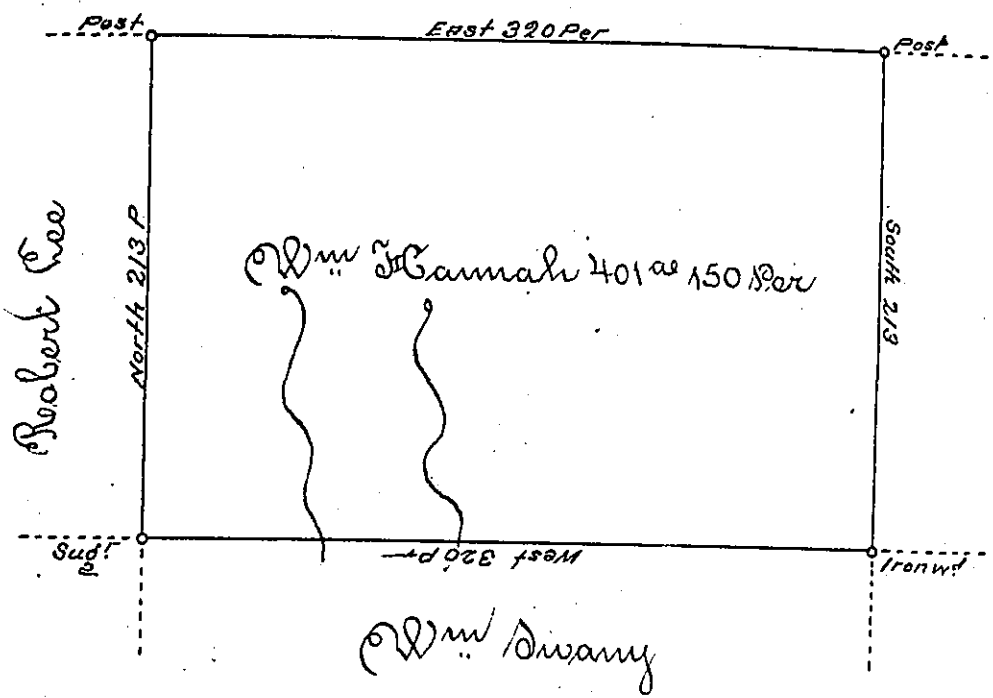


District No 1



Situate on the west side of French Creek in Allegheny County, containing 401^{ac} and 150 perches and allowance of six per cent for roads. He surveyed the 12th day of June 1795 in pursuance of his Improvement dated the 20th day of March 1795

To Genl Broadhead Esq }
Surveyor General }

Wm Power Dy. Sr.

IN TESTIMONY that the above is a copy of the original remaining on file in the Department of Internal Affairs of Pennsylvania, made conformably to an Act of Assembly approved the 16th day of February, 1833, I have hereunto set my Hand and caused the Seal of said Department to be affixed at Harrisburg, this

Twentieth day of December 1894.

Thos S Stewart
Secretary of Internal Affairs.